

Galaxy Star

TESTING

Water Absorption: 0.10 %
Compressive Strength: NPD
Density: 3008-3023 kg/m³
Flexural Strength: 24.6 Mpa
Hardness on the Mohs scale:
6.5-7

PETROGRAPHIC NAME

Gabbro

CHARACTERISTICS

100% natural

A tough material that can take daily use and doesn't require heavy maintenance. When used in high traffic areas, though, there is a possibility of scratching. Dust, sand, and debris can all cause scuffs and scratches that will show up more prominently on the dark colored surface compared to lighter stones.

While granite is an incredibly hard and tough material, care still needs to be taken, especially around the edges and corners. It is a fairly brittle material, capable of being cracked or broken if struck sharply with a hard object.



AVAILABLE FINISHES

POLISHED

- High gloss, mirror-like surface
- Accentuates the contrast, depth of colors and character of the stone
- Smooth, shiny and reflective
- Highly prone to fingerprints
- Retains its shine for a very long time, which makes it relatively easy to clean and care for
- During polishing process a clear epoxy resin filler may have been used to fill any micro fissures or tiny pitting, however this does not affect the integrity of the stone, it merely provides an even smoother surface finish



- Galaxy Star is an extremely durable stone which is particularly hard, with a relatively uniform colour and background (can have a dark black background, a greenish/black shading, or have some white in the background)
- Its timeless appearance provides a classic or chic look that can blend with almost any other color
- The beautiful and distinguishing factor of Galaxy Star granite is the metallic flecks, caused by the presence of broncrite
- Recommended for both indoor and outdoor usage. Most commonly used in countertops, flooring and staircases
- The durability and beauty of the material are traits that usually put it in an area that is highly trafficked and will be seen by many
- Because of its quality, density, and color, Galaxy Star is almost impossible to stain
- The veining and colour can vary considerably and a small sample of Black Galaxy granite may not be representative of the whole slab
- Origin: the Ongole area of South India.

DAILY CARE

A soft cloth or paper towel and hot water or a ph-neutral cleaner are sufficient to clean, disinfect and protect the countertop.

Common abrasive cleaners, which can cause damage (discolor or scratch) to the surface, should be avoided.

SPILLS

Acidic liquids can cause damage to the stone and should not be spilled onto the surface if possible. Specialty cleaners are available, but typically a warm soapy cloth or sponge should do. Cooking oils may also leave a stain if not wiped up.

Spills will not necessarily absorb and stain immediately, but they still need to be wiped up as soon as possible.

HEAT

Although extremely durable as granite is, it's best to use a trivet beneath a hot pot or pan. As extreme changes in temperature can harm or even crack it.

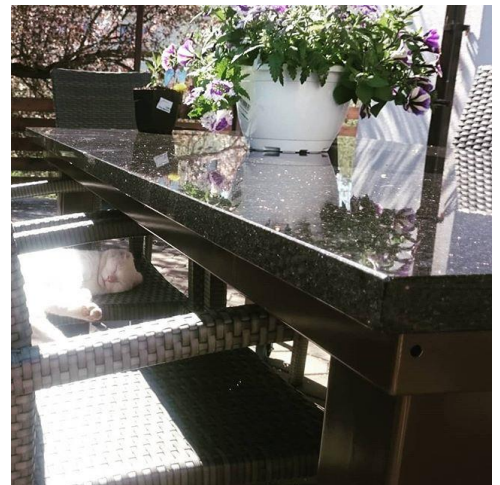


DO

- Wipe up any spills promptly
- Use coasters for liquids in glasses, cans and bottles
- Use hot pads underneath pots and pans
- Use cutting boards

DO NOT

- Use generic cleaning products (as bleach, glass cleaners, and other degreasers and common household cleaners)
- Use ammonia-based cleaners and vinegar
- Use bathroom, tub&tile or grout cleaners
- Sit or stand on the countertop
- Store liquids or toiletries directly on the countertop



NEROSTEIN
NATURE IN YOUR HOME

Nerostein OÜ
Tammi tee 71, 76915 Vatsla
Harjumaa, Estonia
www.nerostein.com